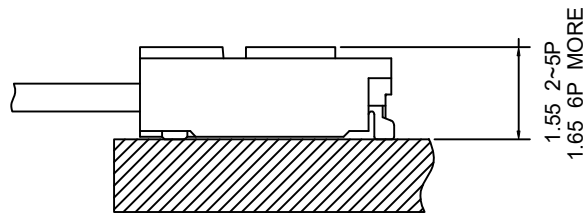


Specifications

- Current rating:2A AC,DC
- Voltage rating:50V AC,DC
- Temperature range:-25°C~+85°C
- Contact resistance:20mΩMax.
- Insulation resistance:100MΩMin.
- Withstanding voltage:500V AC/minute
- *Compliant with RoHS and REACH*
- *Meet the HF/Halogen Free,need to customize*
- *Contact HDGC for details*

Assembly layout





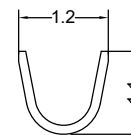
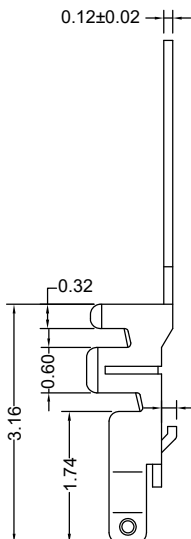
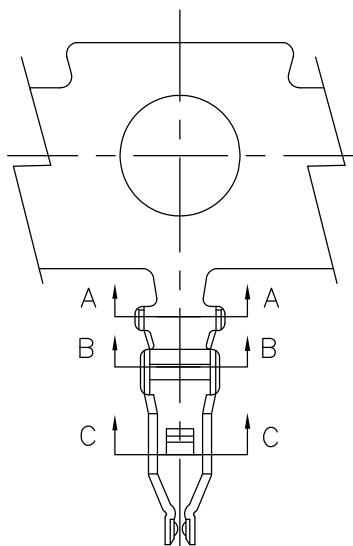
HDGC1202 Series 1.20mm (.047") Pitch Wire to Board Connector

HDGC1202-T

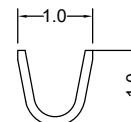
1.20mm pitch Crimp Terminal

Reference Informations:

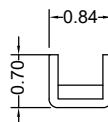
*Used in HDGC1202 series Housing



SECTION:A-A



SECTION:B-B



SECTION:C-C

Ordering information & Specifications:

Unit:mm

Part NO.	Wire Range	Insulation O.D.	Material	Finish	Qty/reel
HDGC1202-GP	AWG#30-#36	0.75mm(max)	Phosphor Bronze	Gold over Nickel	20,000 PCS

HDGC1202H-XP

1.20mm pitch Housing

Reference Informations:

*Material:LCP,UL94V-0

*Suitable HDGC1202-T series Terminal

*Mates with HDGC1202WR-S-XP series Wafer

*Color:Black

Ordering Information:

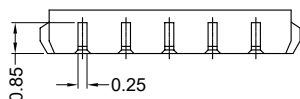
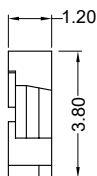
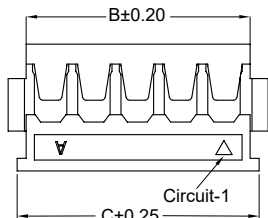
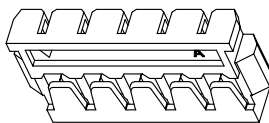
HDGC1202H-XP - ***
1 2

1.Part No.

2.Material:

(Blank):LCP,UL94V-0

GWT:LCP,UL94V-0,GWT 750°C



Ordering Information & Dimensions:

PART NO.	Dimensions		
	A	B	C
2P	1.20	2.60	3.10
3P	2.40	3.80	4.30
4P	3.60	5.00	5.50
5P	4.80	6.20	6.70
6P	6.00	7.40	7.90
7P	7.20	8.60	9.10
8P	8.40	9.80	10.30
9P	9.60	11.00	11.50
10P	10.80	12.20	12.70
11P	12.00	13.40	13.90
12P	13.20	14.60	15.10
13P	14.40	15.80	16.30
14P	15.60	17.00	17.50
15P	16.80	18.20	18.70

Unit: mm



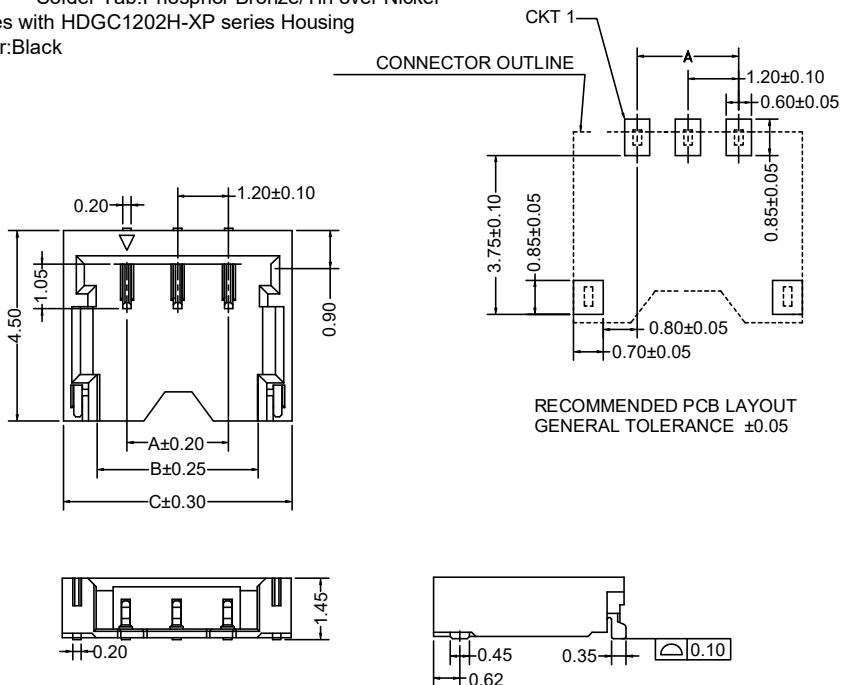
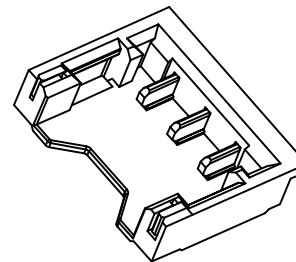
HDGC1202 Series 1.20mm (.047") Pitch Wire to Board Connector

HDGC1202WR-S-XP

1.20mm pitch 90° Wafer - SMT TYPE

Reference Informations:

- *Material: Pin: Phosphor Bronze/Tin over Nickel
Insulator: Nylon 9T, UL94V-0
Solder Tab: Phosphor Bronze/Tin over Nickel
- *Mates with HDGC1202H-XP series Housing
- *Color: Black



Ordering Information:

HDGC1202WR-S-XP - ^{***} - ^{**}
1 2 3

- Part No.
- Material:
(Blank): Nylon 9T, UL94V-0
GWT: Nylon 9T, UL94V-0, GWT 750 °C
- Finish:
(Blank): Tin over Nickel
G: Gold over Nickel

Ordering Information & Dimensions:

PART NO.	Dimensions		
	A	B	C
2P	1.20	2.60	4.20
3P	2.40	3.80	5.40
4P	3.60	5.00	6.60
5P	4.80	6.20	7.80
6P	6.00	7.40	9.00
7P	7.20	8.60	10.20
8P	8.40	9.80	11.40

Unit: mm